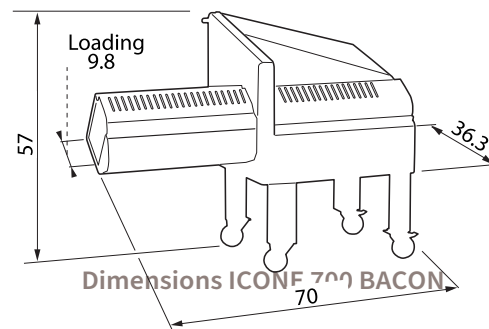
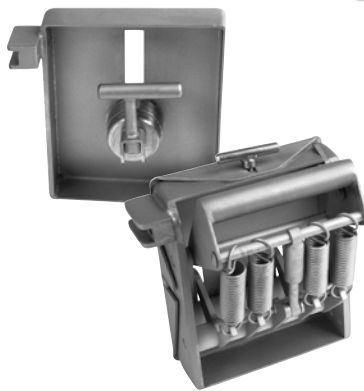


# Chop Cutter



- 304 Stainless Steel
- Automatic return
- Smooth, sawtoothed or microsawtoothed blades
- Slides Modes: step by step and continuous according depending on products to slice
- Adjustment of thickness up to 3.1 inches (Even during the cut)
- 2 cadences of cut : 98 and 196 cuts/min.
- Hydraulic advance system : this principle is necessary for an intensive use in heavy conditions (humidity and cold)
- Chop cutter cleaning : with water Adapted to the high-pressure cleaning
- Indication of waterproofness IP67
- Complies with CE standards



Standard and special claw with compression spring

	Tension	Loading magazine (in)	Motor	Power	Weight (Lbs)
SMSE-CCHC	208V 3P60HZ	W 7.9 x H 9.4 x L 28	3+0.75CV	Knife power: 3HP Pusher: 0.75HP	660

Unisource Food Systems, Inc. 170 Wilbur Pl. Bohemia, NY, 11716 Suite 300

[supermarketstoreequipment.com](http://supermarketstoreequipment.com) [info@supermarketstoreequipment.com](mailto:info@supermarketstoreequipment.com)

Nationwide Service Hotline: 1.516.527.3309

