



Increase Your Quality with Old World Technology

INTRODUCING ITALIAN BRICK PIZZA OVENS FROM ITALY

Napoli Pizza Ovens

Traditional Dome Static Oven

Features:

- Fully assembled, insulated and ready to use
- Available in wood burning, gas burning or combo
- Styles offered in Standard, Dome or Mosaic
- 30-3/4" wide doors
- UL and NSF Approved
- Round internal hearth cooking chamber can rotate or stay stationary for even, high volume cooking
- Gas burner and wood combination produces great taste and a beautiful visual attraction
- Multiple shapes, size, tiles & finishes available for the ultimate look
- Ovens are supported on durable Iron stands with iron doors
- Ovens include thermometer and stack exhaust connection
- 1 year parts/labor & 24/7 nationwide service
- All replacement parts in stock



UNI-NL-120



Front View

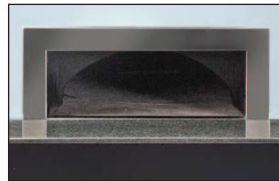
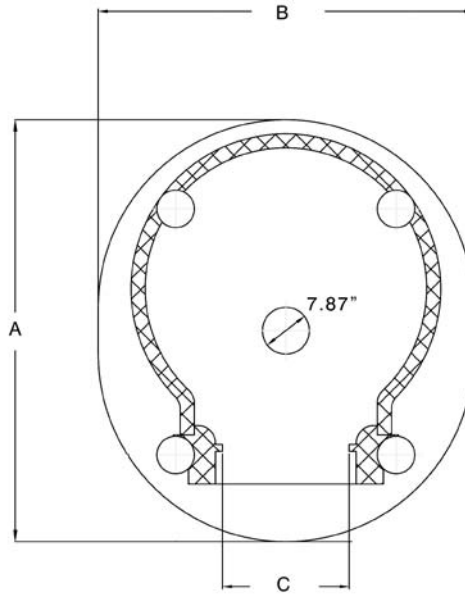


This oven is excellent for Pizzerias that want a modern look with a traditional hearth bake & flavor without sacrificing quality.



Napoli Pizza Ovens

Traditional Dome Static Oven



DESIGN: 30-3/4" Door Width
For modern premises.

NOTE: Ovens Require 1/2" Gas Line Connection

	UNI-NL120	UNI-NG-120	UNI-NL140	UNI-NG-140	UNI-NL-160	UNI-NG-160
Baking Surface	47.25" x 47.25"	47.25" x 47.25"	55" x 55"	55" x 55"	63" x 63"	63" x 63"
Power consumption	-	95,000 BTUs	-	95,000 BTUs	-	95,000 BTUs
Electrical	220/60/1 Phase 10 amps	220/60/1 Phase 10 amps	220/60/1 Phase 10 amps	220/60/1 Phase 10 amps	220/60/1 Phase 10 amps	220/60/1 Phase 10 amps
Total weight	2,425 lbs.	2,425 lbs.	2,866 lbs.	2,866 lbs.	4,409 lbs.	4,409 lbs.
Pizza capacity	7-8	7-8	10-12	10-12	13-15	13-15
Supply	Wood	Wood/Gas Combo	Wood	Wood/Gas Combo	Wood	Wood/Gas Combo
Height	78.75"	78.75"	78.75"	78.75"	78.75"	78.75"
A = Depth	71"	71"	74"	74"	87"	87"
B = Width	63"	63"	69"	69"	78"	78"
C = Door Opening	21-1/4"	21-1/4"	30-3/4"	30-3/4"	32-1/4"	32-1/4"

Direct Phone & Service: (516) 527-3309 • (888) 443-7014 • info@unisourcefoodequipment.com • pizzartconcepts.com
170 Wilbur Place, Suite 300, Bohemia, New York, 11716